

# THE CAS TIMES

August 2024 MONTHLY NEWSLETTER



Volume #1



## FROM THE DIRECTORS' DESK

*Ms. Vivian Pineda & Ms. Jaymey Cochran*

CAS Family,

Welcome to all of our wonderful new and returning families! As we embark on a new school year, I am filled with joy and excitement for the journey ahead. Together, let us continue to nurture our students academically, spiritually, and emotionally. May this year be filled with growth, blessings, and a strong sense of community as we walk hand in hand in faith. Thank you for entrusting us with your children's education. Let's make this year one to remember!

### What's In This Month's Issue:

- Welcome
- Chapel/Bible Message
- What's new at CAS
- Reminders
- Calendar



*General Director*



*Director of Academics*



# Bible Verse of the Month



August  
Bible Verse of the Month

"EVERYONE WHO COMPETES IN THE GAMES GOES INTO STRICT TRAINING. THEY DO IT TO GET A CROWN THAT WILL NOT LAST, BUT WE DO IT TO GET A CROWN THAT WILL LAST FOREVER."  
1 CORINTHIANS 9:25



## WHAT'S NEW AT CAS

### SNAPSHOTS FROM OUR DAILY LIFE AT SCHOOL!







Welcome back! Students are doing an excellent job getting back into the routines for our school community. We are so happy to see the smiling faces and excitement within our school again! The 2024-2025 School Year is off to an excellent start!



FOR MORE VISIT: [www.christianamericanschool.com](http://www.christianamericanschool.com)

# DON'T FORGET

TO VISIT OUR PARENT PORTAL ON OUR WEBSITE

 <p>WELCOME LETTER 2023 <a href="#">CLICK HERE</a></p>	 <p>SCHOOL CALENDAR 2023 -2024 <a href="#">CLICK HERE</a></p>	 <p>STUDENT HANDBOOK 2023 -2024 <a href="#">CLICK HERE</a></p>
 <p>Preschool &amp; Elementary Class Schedules 2023-2024 <a href="#">CLICK HERE</a></p>	 <p>Middle &amp; High School Class Schedules 2023-2024 <a href="#">CLICK HERE</a></p>	 <p>LISTA DE UTILES PERSONAL ELEMENTARY 2023-2024 <a href="#">CLICK HERE</a></p>

You can make  
your payments  
online through  
our website.

Parent Portal

Password:

**CAS2023**



Admissions 2022-2023

Re-enrollment 2022-2023

Tuitions/Colegiaturas

Payment Screen

CAS News

**OUR DELICIOUS CAFETERIA BREAKFAST AND LUNCH  
MENUS ARE AVAILABLE TO BUY ON OUR PARENT PORTAL  
AS WELL.**



# AFTER SCHOOL PROGRAM

FOR INFORMATION CONTACT MR. DANIEL REYNA



## AFTER SCHOOL PROGRAM

Estudiantes de Kinder a 12vo

Apoyo con tareas, refuerzos y práctica adicional para Español, Inglés y Matemática

Precio  
**Q950**  
Mensual

### Días

- ✓ Lunes
- ✓ Martes
- ✓ Miércoles
- ✓ Jueves

### Hora

🕒 3:00pm to 4:00pm

### Salida

📍 Parqueo del Colegio

Contact Us

2218-1100

[dreyna@christianamericanschool.edu.gt](mailto:dreyna@christianamericanschool.edu.gt)



# AFTER SCHOOL PROGRAM

## AFTER SCHOOL PROGRAM



Preschool, Toddlers to Pre-k after school  
School care, eat, rest, and play

### Days

- ✓ Monday
- ✓ Tuesday
- ✓ Wednesday
- ✓ Thursday
- ✓ Friday

### Time

🕒 12:15pm to 2:30pm

### Pick-up

📍 School Parking Lot



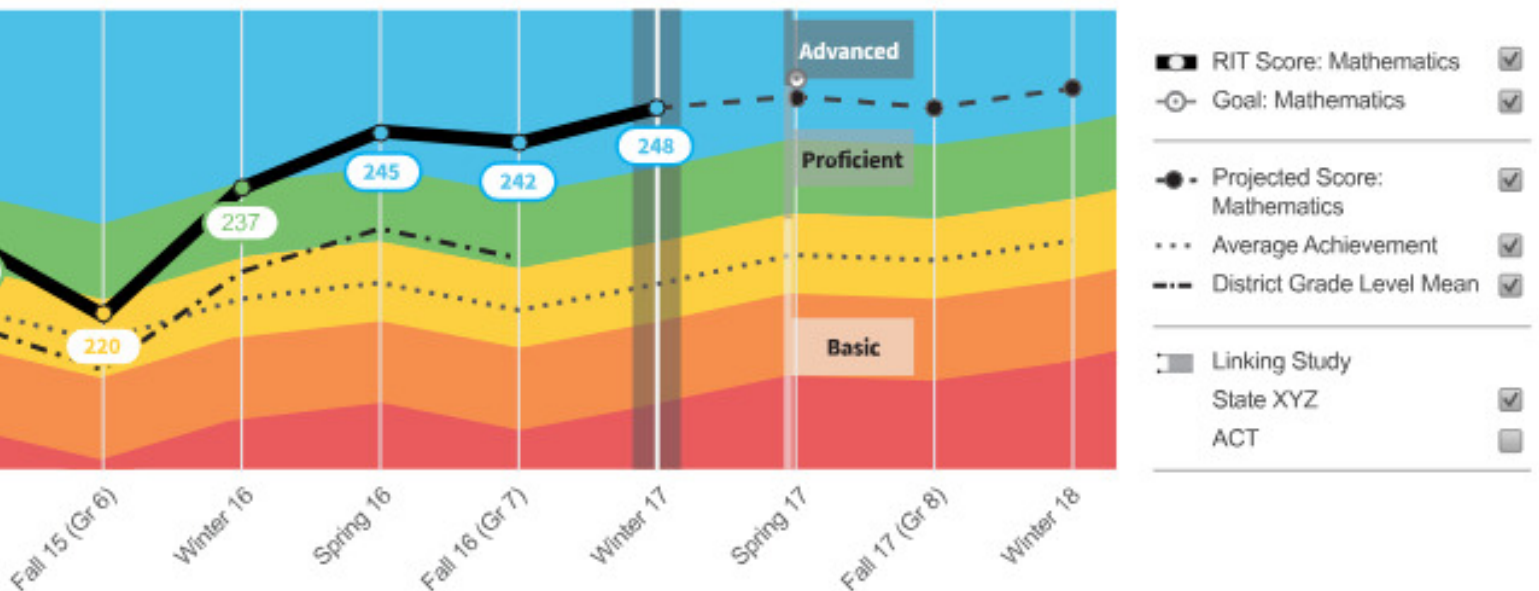
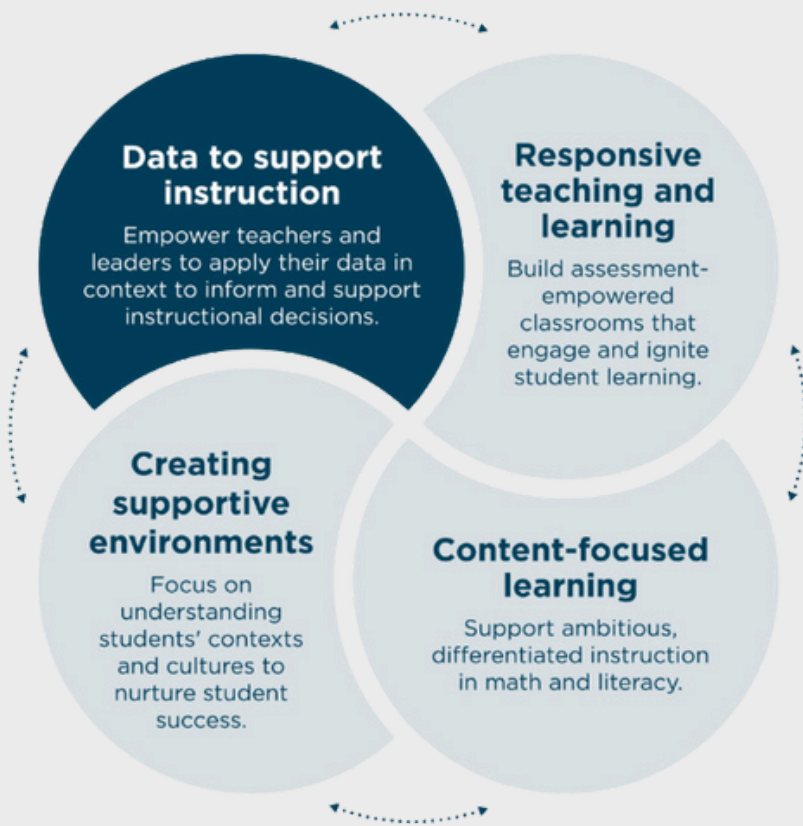
PRICE  
**Q950**  
per month

Contact us: 3163-0599

[admissions@christianamericanschool.edu.gt](mailto:admissions@christianamericanschool.edu.gt)

# NWEA Map Testing

We are excited to introduce NWEA Map testing to our school's academic toolbox! Students will be tested 3 times a year, August, January, and April to track their growth and development. Students do not need to study for this exam, but they should be encouraged to try their best throughout the exam. Once the exam is completed, teachers and school administrators receive a report of each student's individual needs in ELA and Math. We are confident that these exams will help to individualize education and support our students as they thrive at CAS!







8va. Avenida 9-41, zona 8 Mixco, Guatemala  
 (502) 3163-0599 PBX: 2218-1100  
 admissions@christianamericanschool.edu.gt  
 info@christianamericanschool.edu.gt  
 www.christianamericanschool.com

@christian\_americanschool\_

# 2024-2025 SCHOOL YEAR

August						
Mo	Tu	We	Th	Fr	Sa	Su
			1	2	3	4
5	6	7	8	9	10	11
12	13	14	15	16	17	18
19	20	21	22	23	24	25
26	27	28	29	30	31	

September						
Mo	Tu	We	Th	Fr	Sa	Su
2	3	4	5	6	7	8
9	10	11	12	13	14	15
16	17	18	19	20	21	22
23	24	25	26	27	28	29
30						

October						
Mo	Tu	We	Th	Fr	Sa	Su
	1	2	3	4	5	6
7	8	9	10	11	12	13
14	15	16	17	18	19	20
21	22	23	24	25	26	27
28	29	30	31			

November						
Mo	Tu	We	Th	Fr	Sa	Su
				1	2	3
4	5	6	7	8	9	10
11	12	13	14	15	16	17
18	19	20	21	22	23	24
25	26	27	28	29	30	

December						
Mo	Tu	We	Th	Fr	Sa	Su
2	3	4	5	6	7	8
9	10	11	12	13	14	15
16	17	18	19	20	21	22
23	24	25	26	27	28	29
30	31					

January						
Mo	Tu	We	Th	Fr	Sa	Su
		1	2	3	4	5
6	7	8	9	10	11	12
13	14	15	16	17	18	19
20	21	22	23	24	25	26
27	28	29	30	31		

February						
Mo	Tu	We	Th	Fr	Sa	Su
3	4	5	6	7	8	9
10	11	12	13	14	15	16
17	18	19	20	21	22	23
24	25	26	27	28		

March						
Mo	Tu	We	Th	Fr	Sa	Su
3	4	5	6	7	8	9
10	11	12	13	14	15	16
17	18	19	20	21	22	23
24	25	26	27	28	29	30
31						

April						
Mo	Tu	We	Th	Fr	Sa	Su
		1	2	3	4	5
6	7	8	9	10	11	12
13	14	15	16	17	18	19
20	21	22	23	24	25	26
27	28	29	30			

May						
Mo	Tu	We	Th	Fr	Sa	Su
			1	2	3	4
5	6	7	8	9	10	11
12	13	14	15	16	17	18
19	20	21	22	23	24	25
26	27	28	29	30	31	

- |  |  |  |
|--|--|--|
| <b>6 AUG</b> Meet the Teacher              | <b>7 DEC</b> Winter Celebration          | <b>20 MAR</b> Field Trip 8th/5th Grade   |
| <b>7 AUG</b> First Day of School           | <b>10-12 DEC</b> Midterm Exams           | <b>27 MAR</b> Elementary Talent Show     |
| <b>15 AUG</b> National Holiday             | <b>12 DEC</b> Night of Lights            | <b>28 MAR</b> MS/HS Talent Show          |
| <b>12-16 AUG</b> Elementary NWEA Testing   | <b>13 DEC-2 JAN</b> Winter Break         | <b>31-3 APR</b> Elementary NWEA Testing  |
| <b>19-23 AUG</b> MS/HS NWEA Testing        | <b>6 JAN</b> 2nd Semester Begins         | <b>4-9 APR</b> MS/HS NWEA Testing        |
| <b>5 SEP</b> Field Trip 12th/1st Grade     | <b>10 JAN</b> Student Led Conferences    | <b>7 APR</b> Elementary Spelling Bee     |
| <b>13 SEP</b> Independence Day Celebration | <b>16 JAN</b> Field Trip 9th/4th Grade   | <b>8 APR</b> MS/HS Spelling Bee          |
| <b>16 SEP</b> NO SCHOOL                    | <b>21 JAN</b> 100th Day of School        | <b>14-21 APR</b> Semana Santa            |
| <b>1 OCT</b> Children's Day                | <b>20-23 JAN</b> Elementary NWEA Testing | <b>24 APR</b> Field Trip 6th/7th Grade   |
| <b>4 OCT</b> Student Led Conferences       | <b>23 JAN</b> MS/HS Science Fair         | <b>25 APR</b> Prom 5th/8th/12th Grade    |
| <b>10 OCT</b> Field Trip 11th/2nd Grade    | <b>24 JAN</b> Elementary Science Fair    | <b>30 APR</b> Field Trip - All Grades    |
| <b>10 OCT</b> Revolution Day               | <b>27-31 JAN</b> MS/HS NWEA Testing      | <b>1-2 MAY</b> National Holiday          |
| <b>25 OCT</b> World Fair                   | <b>7 FEB</b> Field Trip - All Grades     | <b>7 MAY</b> School Play                 |
| <b>1 NOV</b> All Saints' Day               | <b>22 FEB</b> Family Sports Day          | <b>14-16 May</b> Final Exams             |
| <b>7 NOV</b> Field Trip 10th/3rd Grade     | <b>5-6 MAR</b> MS/HS Retreat             | <b>17 MAY</b> Family Day Field Trip      |
| <b>27 NOV</b> Thanksgiving Celebration     | <b>7 MAR</b> Elementary Retreat          | <b>27 MAY</b> Student Led Conferences    |
| <b>28-29 NOV</b> Thanksgiving Holiday      | <b>10 MAR</b> Student Led Conferences    | <b>28 MAY</b> K/5th/8th Grade Graduation |
|  |  | <b>5 JUN</b> Senior Graduation           |

No School Field Trip Event Exams/Graduation



# SEMESTER 1

***Christian American School***

## 2024-2025

### **August**

- |                             |                                 |
|-----------------------------|---------------------------------|
| 6 - Meet the Teacher        | 12-16 - Elementary NWEA Testing |
| 7 - First Day of School     | 19-23 - MS/HS NWEA Testing      |
| 27 - Civic Act (12th Grade) | 26 - 6th-12th Grade Picture Day |
|                             | 27 - PS-5th Grade Picture Day   |

### **September**

- |                                   |                                   |
|-----------------------------------|-----------------------------------|
| 5 - Field Trip 12th/1st Grade     | 19 - Oratoria                     |
| 13 - Independence Day Celebration | 24 - Civic Act (11th Grade)       |
| 16 - National Holiday (NO SCHOOL) | 26 - Parent Workshop              |
|                                   | 27 - Student Government Elections |

### **October**

- |                                |                                   |
|--------------------------------|-----------------------------------|
| 1 - Children's Day             | 18 - National Holiday (NO SCHOOL) |
| 4 - Progress Report            | 25 - World Fair                   |
| 10 - Field Trip 11th/2nd Grade | 29 - Civic Act (10th Grade)       |
|                                | 31 - Parent Workshop              |

### **November**

- |                                  |                               |
|----------------------------------|-------------------------------|
| 1 - National Holiday (NO SCHOOL) | 21 - Parent Workshop          |
| 7 - Field Trip 10th/3rd Grade    | 26 - Civic Act (9th Grade)    |
| 19 - Declamación                 | 27 - Thanksgiving Celebration |
|                                  | 28/29 - Holiday (NO SCHOOL)   |

### **December**

- |                           |                                  |
|---------------------------|----------------------------------|
| 3 - Civic Act (8th Grade) | 7 - Winter Celebration           |
| 4/9 - Review Week         | 10/12 - Midterm Exams            |
| 5 - Parent Workshop       | 12 - Night of Lights             |
|                           | 13/31 - Winter Break (NO SCHOOL) |





# SEMESTER 2

**Christian American School**

**2024-2025**

## **January-**

- |                                 |                                |
|---------------------------------|--------------------------------|
| 6 - Classes Resume              | 23 - MS/HS Science Fair        |
| 10 - Report Card                | 24 - Elementary Science Fair   |
| 16 - Field Trip (9/4th Grade)   | 27/31 - MS/HS NWEA Testing     |
| 21 - 100th Day of School        | 28 - Civic Act (7th Grade)     |
| 20/23 - Elementary NWEA Testing | 30 - Parent Workshop           |
|                                 | 31 - Spanish Book Presentation |

## **February-**

- |                                |                            |
|--------------------------------|----------------------------|
| 4/6 - Book Fair                | 14 - Friendship Day        |
| 5 - Read Around the World Day  | 17/21 - Sports Week        |
| 7 - Field Trip (All Grades)    | 22 - Family Sports Day     |
| 10 MS/HS Picture Day           | 25 - Civic Act (6th Grade) |
| 11 - PS/Elementary Picture Day | 27 - Parent Workshop       |

## **March**

- |                          |                                 |
|--------------------------|---------------------------------|
| 3/7 - School Spirit Week | 20 - Field Trip (5th/8th Grade) |
| 5/6 - MS/HS Retreat      | 25 - Civic Act (1st/2nd Grade)  |
| 7 - Elementary Retreat   | 27 - Parent Workshop            |
| 10 - Progress Report     | 27 - Elementary Talent Show     |
| 14 - Pi Day              | 28 - MS/HS Talent Show          |

## **April**

- |                                |  |
|--------------------------------|--|
| 31/3 - Elementary NWEA Testing | 14/21 - Semana Santa                         |
| 4/9 - MS/HS NWEA Testing       | 24 - Parent Workshop                         |
| 7 - Elementary Spelling Bee    | 24 - Field Trip (6th/7th Grade)              |
| 8 - MS/HS Spelling Bee         | 25 - Prom (5th/8th/12th Grade)               |
| 10 - Ortografia                | 29 - Civic Act (2nd/3rd Grade)               |
| 11 - Splash Day                | 30 - Field Trip (Play Rehearsal: All Grades) |

## **May-**

- |                                    |                                   |
|------------------------------------|-----------------------------------|
| 1/2 - National Holiday (NO SCHOOL) | 9 - Mothers Day Celebration       |
| 6 - Civic Act (Kinder/1st)         | 14/16 - Final Exam Week           |
| 7 - School Play                    | 17 - Family Day Field Trip        |
| 8/13 - Review Week                 | 27 - Report Cards                 |
|                                    | 28 - Graduation (K/5th/8th Grade) |
|                                    | 5 JUNE - Senior Graduation        |



# IMPORTANT ANNOUNCEMENT

We remind you that the Coordination numbers are deactivated and their private phones are for personal use.

Communication for the 2024-2025 school year with the different departments will be exclusively via email, so we provide you with the extensions and emails below:

Ms. Vivian Pineda-General Director  
info@christianamericanschool.edu.gt

Ms. Jaymey Cochran-Director of Academics  
jcochran@christianamericanschool.edu.gt  
Ext. 203

Mr. Daniel Reyna-Dean of Students  
dreyna@christianamericanschool.edu.gt  
Ext. 211

Ms. Leonor Hernandez-Middle & High School Coordinator  
lmartinez@christianamericanschool.edu.gt  
Ext. 209

Ms. Rocío Gutiérrez-Preschool & Elementary Coordinator  
rgutierrez@christianamericanschool.edu.gt  
Ext. 202

Ms. Sofía Rivas-Psychologist  
srivas@christianamericanschool.edu.gt  
Ext. 218

Ms. Victoria González-Librarian  
library@christianamericanschool.edu.gt  
Ext. 206

Ms. Emi Salles-Admissions Secretary  
admissions@christianamericanschool.edu.gt  
Ext. 201

Ms. Sisi De León- Academic Secretary  
secretary@christianamericanschool.edu.gt  
Ext. 215

Mr. Daniel Pineda-Cashier  
contabilidad@christianamericanschool.edu.gt  
Ext. 200





# Updates & Reminders

## MONTHLY PRAYER MEETING

**AUGUST 20, 2024**

**🕒 8:00 AM**

**CAS CHAPEL**

We invite all parents and families to join us each month for a moment of prayer with Pastor Tony Hernández.



## Parent Workshop

HOW TO ENHANCE MY CHILD'S LEARNING FROM HOME

**September 26th  
8:00 AM**



@CHRISTIANAMERICANSCHOOL



# Updates & Reminders

## EXTRA CREDIT 2024-2025



Activities for Credits	Date	Amount of Credit
1st Parent Workshop	September 26th	2 credits
2nd Parent Workshop	October 31st	
3rd Parent Workshop	November 21st	
4th Parent Workshop	December 5th	
5th Parent Workshop	January 30th	
6th Parent Workshop	February 27th	
7th Parent Workshop	March 27th	
8th Parent Workshop	April 24th	
Independence Day Celebration	September 13th	2 credits
World Fair	October 25th	
Thanksgiving Celebration	November 27th	
Night of Lights	December 12th	
Family Sports Day	February 22nd	
Retreat	March 7 Elementary March 5, 6 MS&HS	
Talent Show	March 27th Elementary March 28th MS&HS	
Winter Celebration	December 7th	1 credit
School Play	May 7th	
Sports Team	Only MS&HS	1 credit

It all adds up and will be included in your 2nd Semester Grades

**\*\*FOR EVERY SUBJECT\*\***

Be sure to participate in the following activities!!!

Total Points Acquired/Puntos netos: Elementary 5 pts/Middle & High School 6 pts

**BONUS**



# Updates & Reminders

**CHEERLEADING UNIFORMS**  
**CHRISTIAN AMERICAN SCHOOL**



**Q,595.00**

**INCLUDES:** CHEER LINER, SKIRT, AND LYCRA.

Payments and Orders are to be made directly to  
**EL RODEO**

ALMACEN  
**EL RODEO**  
\*uniformes\*

**SPORTS**  
**UNIFORM**  
**CHRISTIAN AMERICAN SCHOOL**



**Q.395.00**

**INCLUDES:** SHORTS - JERSEY - TRAINING JERSEY - SOCKS

# Contacting CAS





**ROCIO GUTIERREZ**  
Preschool and Elementary  
Coordinator  
rgutierrez@christianamericanschool.edu.gt

**LEONOR HERNANDEZ**  
Middle and High School  
Coordinator  
lmartinez@christianamericanschool.edu.gt





# August

## 2024

SUNDAY	MONDAY	TUESDAY	WEDNESDAY	THURSDAY	FRIDAY	SATURDAY
				1	2	3
4	5	6  Meet the teacher	7  Have a great FIRST Day	8	9	10
11	12	13	14	15 	16	17
NWEA TESTING ELEMENTARY						
18	19	20 	21	22	23	24
Prayer Meeting NWEA TESTING MS/HS						
25	26  6-12th Picture Day	27  12th Civic Acts	28  PS-5th Picture Day	29	30	31